

SB SCANNERS

500/600/1000



User Manual

October 2010
Rev. 102210

TABLE OF CONTENTS

Contents

Radio Frequency Interference	3
About the SB Scanner	3
SB Scanner Equipment	4
SB Scanner Equipment Checklist	4
SB Scanner System Requirements	4
Installing the Optional USB Driver	5
Install Scanner Driver Software	5
Uninstall Scanner Driver Software	6
Getting Started with the SB Scanner	7
Install Scanner hardware	7
Initial Scanner Image Calibration	9
SB Scanner Troubleshooting	10
Clearing Jams	10
Document Feeding Problems	10
Check Images are streaking or fading	10
Cleaning the Scanner	10
Common Error Codes from the Scanner	12
SB Scanner Specifications	13

Radio Frequency Interference

CE Conformity and FCC Statement

CE This equipment has been tested and found to comply with the limits of the European Council Directive on the approximation of the member states relating to electromagnetic compatibility according to EN 55022/55024 Part 15 B

FCC This equipment has been tested and found to comply with the limits for a Class B digital device, pursuant to Part 15 of the FCC Rules. These limits are designed to provide reasonable protection against harmful interference in a residential energy and, if not installed and used in accordance with the instructions, may cause harmful interference to radio communications. However, there is no guarantee that interference will not occur in a particular installation. If this equipment does cause harmful interference to radio or television reception, which can be determined by turning the equipment off and on, the user is encouraged to try to correct the interference by one or more of the following measures:

- Reorient the receiving antenna
- Increase the separation between the equipment and receiver
- Move the computer away from the receiver
- Connect the equipment into an outlet on a circuit different from that to which the receiver is connected

Trademarks

Windows, Windows 2000, 2003, XP, Vista and Microsoft are the registered trademarks of Microsoft Corporation. Adobe ACROBAT Signature is registered trademarks or trademarks of Adobe Systems Incorporated in the United States and/or other countries.

About the SB Scanner

Thank you for purchasing our SB Scanner.

We have designed this product to provide the user with a simple but effective tool to capture, manage and archive documents of many types. We encourage you to read this short, but important User Manual carefully.

Your SB Scanner has the latest technology and compatible drivers. These drivers are tested and certified by our in-house testing lab to be compliant with Windows 7, Windows Vista, Windows XP (SP2), 2003(SP2), Windows 2000 (SP4) operating systems. We also feature a TWAIN 1.9 compatible driver that will work with hundreds of imaging applications. If you experience any difficulty with these drivers, please check our website www.digitalcheck.com to verify that you are using the latest version.

SB Scanner Equipment

SB Scanner Equipment Checklist

The SB Scanner package includes the following pieces:

- SB Scanner (model 500, 600 or 1000)
- USB 2.0 Cable
- Image Calibration Card
- Travel Pouch (SB500 and 600 only)
- Travel Stand (SB600 only)



SB Scanner System Requirements

The following PC specifications are required to operate the SB Scanner with your scanning application software:

Recommended	Minimum
<ul style="list-style-type: none"> ▪ 2.4 GHz Pentium IV processor or faster. ▪ 2 GB RAM 	<ul style="list-style-type: none"> ▪ 1.6 GHz Pentium processor ▪ 512MB RAM
<ul style="list-style-type: none"> ▪ 1.5 GB free disk space 	<ul style="list-style-type: none"> ▪ 1.5 GB free disk space
<ul style="list-style-type: none"> ▪ XP Professional, Vista, 7 	<ul style="list-style-type: none"> ▪ Windows 2000, XP Professional & Vista, 32 bit
<ul style="list-style-type: none"> ▪ USB 2.0 port 	<ul style="list-style-type: none"> ▪ USB 2.0 port

Installing the Optional USB Driver

**** FOR BEST RESULTS PLEASE INSTALL YOUR SOFTWARE BEFORE CONNECTING THE SCANNER TO YOUR COMPUTER ****

The typical application will automatically install all necessary scanner drivers. Please contact your bank or check scanning solution provider for assistance before proceeding.

The enclosed CD contains the standard Windows SB driver, which also installs the TWAIN driver. Follow your bank's instructions before using this CD.

Install Scanner Driver Software

- a) Insert the installation CD into your CD-ROM drive.

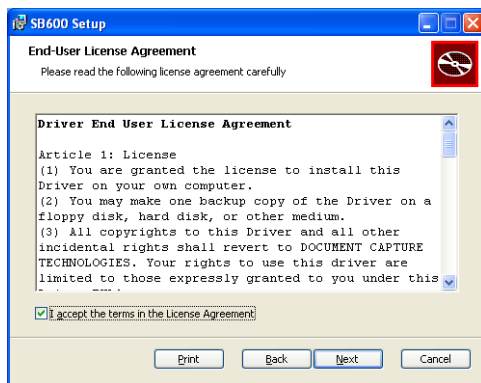


Fig. 1

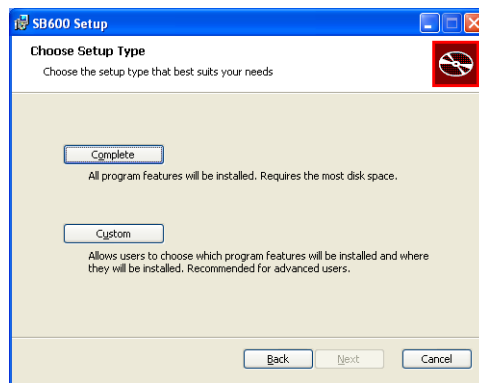


Fig. 2

- b) Check the EULA accept box then click "Next" (Fig. 1) above.
- c) The Choose Setup Type window shows two choices of installations, select the "Complete" button and allow the full installation (Fig. 2) above.
- d) During the installation the Windows Logo screen might appear stating that the software is not Windows certified.
- e) We assure you that our software driver has been fully tested to function properly under Windows environment, select the Continue Anyway button to proceed with the installation, if it displays. (Fig. 3).

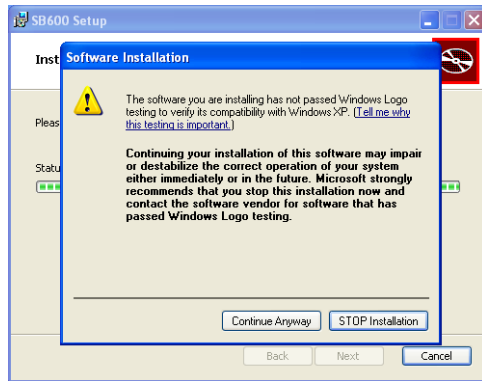


Fig. 3

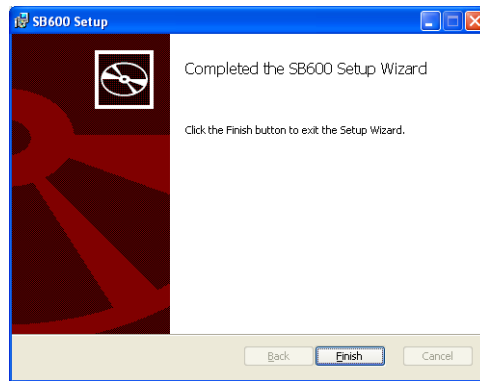


Fig.4

- f) You can now connect the scanner to the PC.

Uninstall Scanner Driver Software

- a) If you should need to un-install the scanner driver, you can do so from Add or Remove Programs.
- b) Go to: START / Control Panel / Add or Remove Programs.
- c) From the list of Currently Installed Programs select your scanner model - SB500/600/1000.
- d) Select the Remove button and your driver will be removed from your system.
- e) It is important that the scanner is connected to your computer when performing this function.
- f) You can also uninstall your PageManger7 or Adobe Reader applications from here.

Getting Started with the SB Scanner

Install Scanner hardware

- a) Connect the USB cable (provided) to your computer and scanner. (Fig. 1)
- b) Make sure the red warning label is removed before connecting this end to your computer.
- c) You may need to reconnect the cable to another USB port on your computer if the scanner cannot be detected. (Check your computer's user guide to identify other available USB ports and their locations.)



Fig. 1



Fig. 2

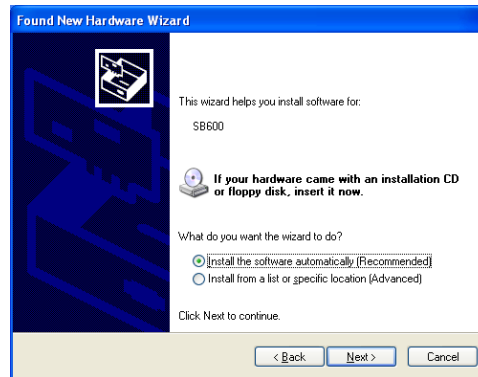


Fig. 3

- d) Once your scanner is connected to your computer, the “Found New Hardware Wizard” window will appear. Choose the “No, not this time” then click “Next”. (Fig. 2)
- e) Make sure you select the “Install the software automatically (Recommended)” option in the second screen that follows. (Fig. 3)

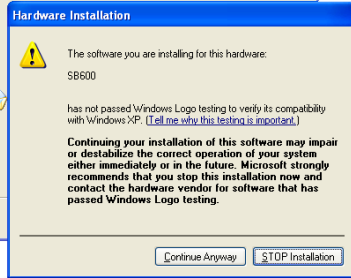
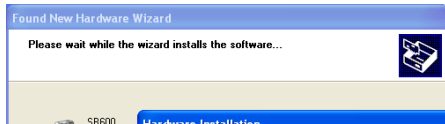


Fig. 4

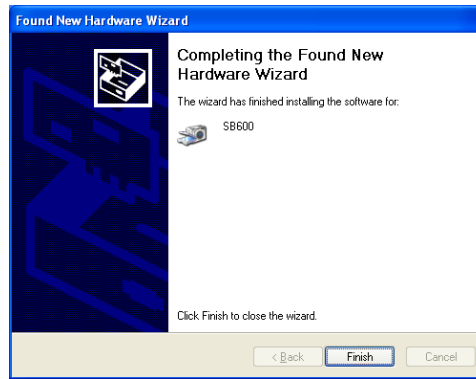


Fig. 5

- f) The “Hardware Installation” window will appear, this is normal and to be expected. (Fig. 4)
- g) Select the “Continue Anyway” then the “Finish” button to finalize your scanner installation.



Fig. 6

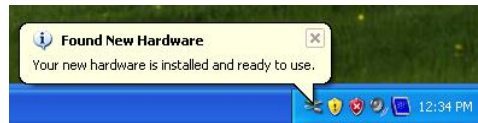


Fig. 7

- h) When your software and hardware have been installed successfully you will see the following information displayed from your system tray when your installation is complete.

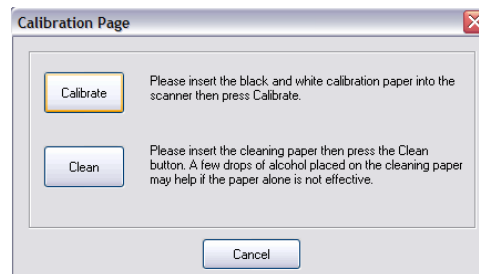
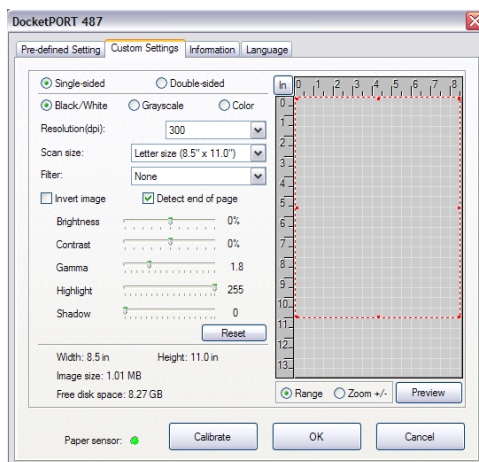
Initial Scanner Image Calibration

Note: Before using your scanner for the first time (and/or using it on a new PC) you must calibrate the unit.

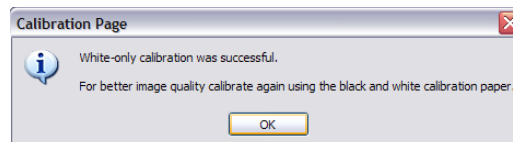
Performing Initial Scanner Calibration

There are two different ways to calibrate your scanner:

- 1) Calibrate from Scanners and Cameras under Control Panel
 - a. Go to: Windows “START” / Control Panel / (Printer and Other Hardware) Scanners and Cameras and you will see your model listed here.
 - b. Right click on your scanner model and a pull down window will appear.
 - c. Select “Calibrate” option to start this process.
 - d. Vista users need to right click on the scanner model and go to “Properties”.
 - e. Insert the calibration target and select “Calibrate” button.
- 2) From your bundled software application (or your own TWAIN compliant application)
 - a. Under the menu toolbar select: File / Select Source (Scanning Source).
 - b. Choose your scanner model “SB500, 600, 1000”.
 - c. Do not select the “SB500, 600, 1000” at this time.
 - d. Under the menu toolbar select: File / Acquire Image Data...
 - e. The TWAIN user interface appears (see image below).
 - f. Insert the calibration target that came with your scanner then select “Calibrate”.



NOTE: Should you lose or forget the calibration target when traveling, you can simply use any plain “white” piece of printer paper to perform the calibration. Accept the message to proceed to scanning. (See below)



SB Scanner Troubleshooting

Clearing Jams

If a jam occurs, the paper path must be cleared. To do this, try to advance the jammed document by selecting the “EJECT” button within your application (if applicable). In case the document does not exit the document track, you can follow these steps:

1. Grab one end of the document and slowly pull it out of the scanner.
2. Make sure that the rollers are free of paper and debris.

Document Feeding Problems

The SB Scanner was designed to be a manually fed scanner. If you notice feeding problems, check the documents for bent or folded edges and for debris in the scanner document track. Make sure the leading edge of your documents are straight and not wrinkled or folded. Insert document at level to the intake slot. If your document has a fold, sharp-bend or is wrinkled, you will need to straighten or flatten it first before scanning.

Check Images are streaking or fading

If you notice either streaking or fading on the images, the scanheads may require cleaning. Refer to the section below on cleaning the scanheads.

Cleaning the Scanner

Cleaning Steps

1. Blow out the paper path using compressed air to remove dust or bits of paper.
2. Clean the scanner with the included cleaning sheet and 70% isopropyl alcohol (not included). Place a few drops along the middle of the cleaning material and proceed to the Calibrate menu, select CLEAN option instead. Your scanner will automatically pass the cleaning material back and forth over the internal image sensor glass.

In severe environments where ink and dirt build up rapidly, it may be necessary to clean the scanner rollers more often. This simple maintenance will dramatically improve the reliability of your scanner over its useful life.

Helpful Hints

1. Do not use stickers to cover up previously sprayed numbers on documents. The backing from the stickers can rub off onto the rollers and cause documents to jam.
2. Do not use "White Out" on scanned documents, the "White Out" can rub off the documents onto the scanner path and walls.
3. Watch for loose debris getting into the scanner such as staples and rubber bands.
4. There are no user available adjustments within the SB Scanner.
5. Periodic and scheduled cleaning should be performed before determining if any further problem determination is needed.

Common Error Codes from the Scanner

-216

Misfeed (The document failed to enter the path on time).

- Remove the document and re-insert it.
- Check for bent or excessively curled leading edges and straighten as needed.
- If they continue to get -216 errors, this might indicate that;
 - The entry drive rollers may be dirty
 - Something may be lodged in the path

-220 Document Stopped in the path or did not exit on time

- Eject the documents, to clear the error condition.
- Check the leading edges and corners of the document and straighten as needed.
- A -220 error code where the document is stopping in the path repeatedly could indicate debris, paper or a staple in the path. Check if the document's leading edge looks OK or is catching on something.
- The scanner may need to be cleaned.

-212 No Checks (There are no checks indicated in the entry pocket)

A scan cycle has been initiated, but there is not a document present. Re-insert the document and try the feeding it again.

-125 No Scanner (The scanner was not found while attempting to initialize the scanner)

- Check the USB cable connections.
- Try a different cable.
- Try a different USB port.

Verify that the PC has the proper drivers and the scanner firmware file is installed.

SBScanner Specifications

Paper Size	<p>Paper Size: SB500: Up to A6 (4.1 x 5.8 inches) (105 x 148 mm) SB600/SB1000: Up to A4 (8.3 x 11.7 Inches) (250 x 353 mm) Document Thickness: 0.0039" - 0.0393" (0.1 - 1 mm)</p>																				
Scanning Method	<p>Concurrent two-sided Duplex Image Creation: 2 x 1296 cell, 106mm CIS Light Source: Tricolor LED</p>																				
Image resolution	<p>100, 120, 200, 240, 300 dpi 600 dpi supported via DCC API 10.09 or newer and TWAIN</p>																				
Image Format	B/W, 16 or 256 gray levels, 24 bit RGB color																				
Power-On Self Test	Automatic self-testing when switching on the unit																				
Software Tools	<p>API Toolkit 32 bit Supported under: Windows 2000, WindowsXP, Windows Vista, Windows 7 Ubuntu 7.05, Red Hat AS - Version 5, OpenSuse</p>																				
Electrical	<p>Power consumption: 2 Watts Standby: 0.2 Watts Input Voltage: 100 to 240 VAC, 50/60 Hz Optional Power Supply: Auto sensing for voltage (available accessory, see www.digitalcheck.com)</p>																				
MTTR:	15 minutes																				
Temperature Ratings:	<p>Operating: 60° - 90° F Storage: 0° - 40° C</p>																				
Humidity:	Operating: 35-85% (non condensing)																				
Dimensions	<table border="1"> <thead> <tr> <th>Model</th> <th>SB500</th> <th>SB600</th> <th>SB1000</th> </tr> </thead> <tbody> <tr> <td>Height</td> <td>1.8" (4.6 cm)</td> <td>1.9" (4.8 cm)</td> <td>7" (17.78 cm)</td> </tr> <tr> <td>Depth</td> <td>2.75" (7 cm)</td> <td>2.4" (6.1 cm)</td> <td>6.9" (17.5 cm)</td> </tr> <tr> <td>Length</td> <td>8" (20.3 cm)</td> <td>11.8" (30 cm)</td> <td>11.8" (30 cm)</td> </tr> <tr> <td>Weight</td> <td>0.7 lb (0.3 kg)</td> <td>1.1 lb (0.5 kg)</td> <td>1.9 lb (0.88 kg)</td> </tr> </tbody> </table>	Model	SB500	SB600	SB1000	Height	1.8" (4.6 cm)	1.9" (4.8 cm)	7" (17.78 cm)	Depth	2.75" (7 cm)	2.4" (6.1 cm)	6.9" (17.5 cm)	Length	8" (20.3 cm)	11.8" (30 cm)	11.8" (30 cm)	Weight	0.7 lb (0.3 kg)	1.1 lb (0.5 kg)	1.9 lb (0.88 kg)
Model	SB500	SB600	SB1000																		
Height	1.8" (4.6 cm)	1.9" (4.8 cm)	7" (17.78 cm)																		
Depth	2.75" (7 cm)	2.4" (6.1 cm)	6.9" (17.5 cm)																		
Length	8" (20.3 cm)	11.8" (30 cm)	11.8" (30 cm)																		
Weight	0.7 lb (0.3 kg)	1.1 lb (0.5 kg)	1.9 lb (0.88 kg)																		
Certifications	<p>Safety: UL, cUL, CE FCC: Class B (Industrial, Business or Home) EMC: CE RoHS Compliant WEEE Compliant</p>																				

Specifications subject to change

Trademarks and registered trademarks are property of their respective owners

***Corporate Headquarters:***

Digital Check Corp.
630 Dundee Rd., Suite 210
Northbrook, IL 60062
Tel: 847/446-2285
Fax: 847/441-5507
Website: www.digitalcheck.com
Email: support@digitalcheck.com